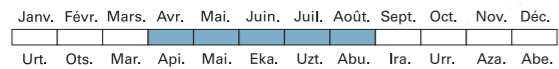
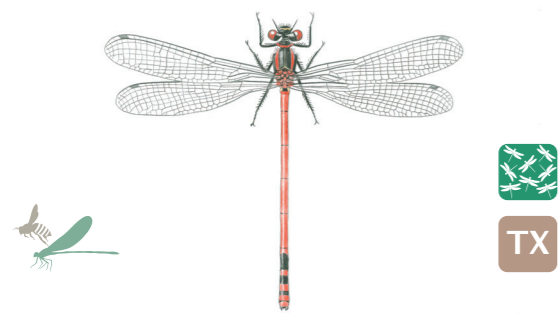
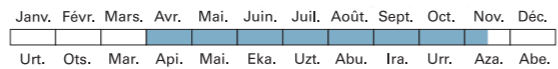




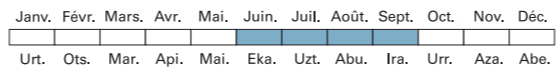
**Nymphe aux corps de feu** *Pyrrhosoma nymphula*  
**Sorgin-orratz hanka-beltz**



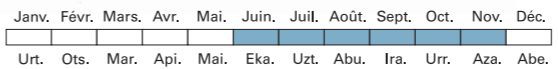
**Agrion délicat** *Ceriatagrion tenellum*  
**Sorgin-orratz hanka-gorri**



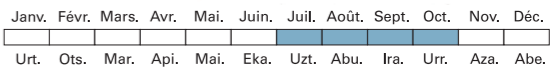
**Agrion blanchâtre** *Platycnemis latipes*  
**Zango-zabal argi**



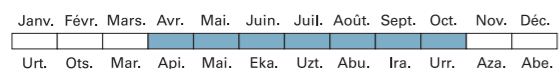
**Aeschna bleue** *Aeschna cyanea*  
**Udazkeneko habe**



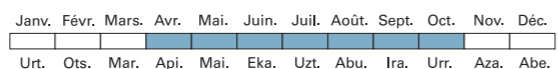
**Aeschna mixte** *Aeschna mixta*  
**Habe ibiltari**



**Anax porte-selle** *Anax ephippiger*  
**Enperadore ibiltari**



**Anax empereur** *Anax imperator*  
**Enperadore**



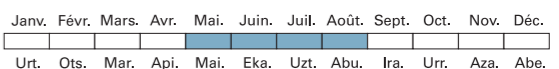
**Anax napolitain** *Anax parthenope*  
**Enperadore ilun**



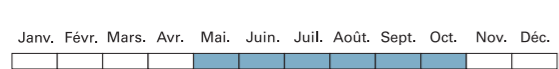
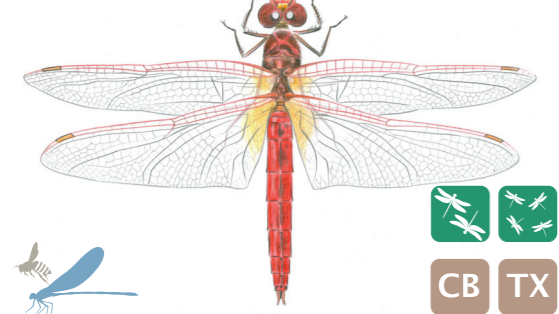
**Aeschna paisible** *Boyeria irene*  
**Iluntzeko burruntz**



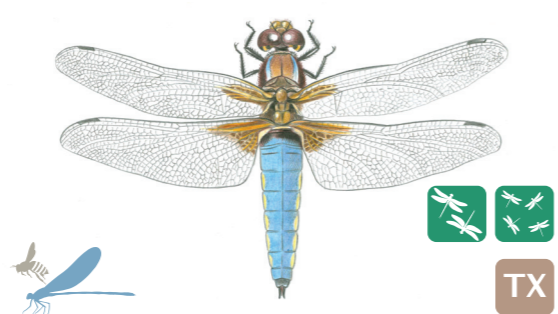
**Cordulégastré annelé** *Cordulegaster boltonii*  
**Erreketako tigre**



**Crocothémis écarlate** *Crocothemis erythraea*  
**Burruntzi gorri**



**Libellule déprimée** *Libellula depressa*  
**Zapaldutako burruntz**



**Libellule à quatre taches** *Libellula quadrimaculata*  
**Lau orbaneko burruntzi**



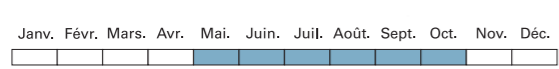
**Orthétrum à styles blancs** *Orthetrum albistylum*  
**Txitxiburduntzi orratz-zuri**



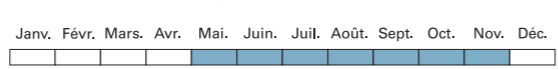
**Orthétrum brun** *Orthetrum brunneum*  
**Txitxiburduntzi mutur-zuri**



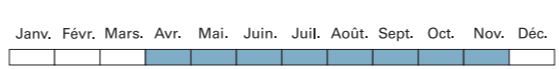
**Orthétrum réticulé** *Orthetrum cancellatum*  
**Txitxiburduntzi isats-beltz**



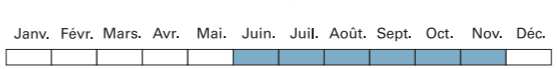
**Orthétrum bleuisseant** *Orthetrum coerulescens*  
**Txitxiburduntzi papar-marradun**



**Sympétrum de Fonscolombe** *Sympetrum fonscolombii*  
**Suburduntzi zain-gorri**



**Sympétrum fascié** *Sympetrum striolatum*  
**Suburduntzi marradun**



**Trithémis annelé** *Tribemis amulata*  
**Afrikar more**

