

*El bosque como tejido conectivo entre el mar y la montana*

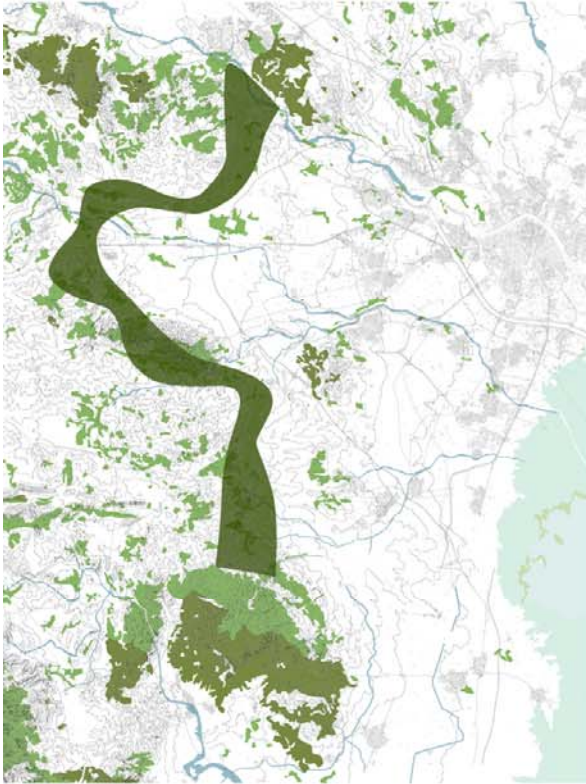


## *TIPOLOGIA DE BOSQUES, SU ESCALA REGIONAL Y SUS FUNCIONES*

# CINTURON ECOLOGICO

## THE ECO BELT

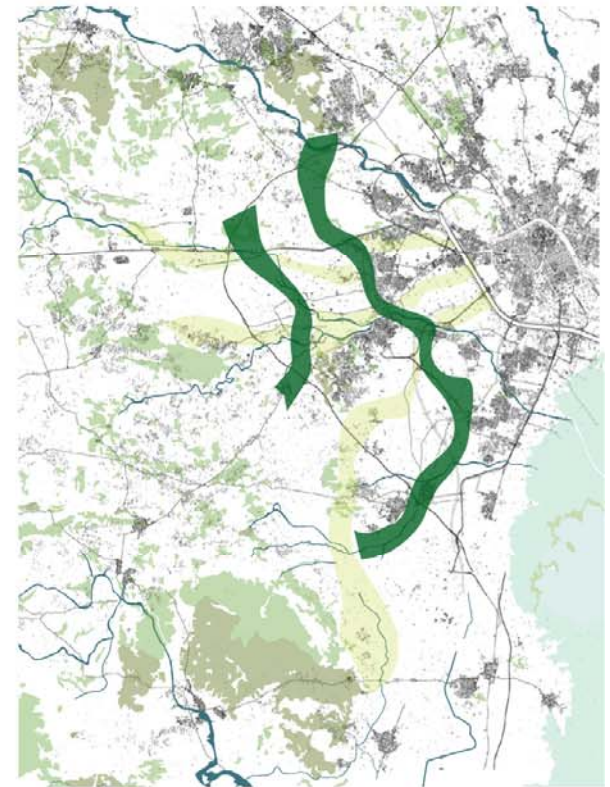
*transition from mountains to valley*  
*ecosystem corridor*  
connection between existing matorral and forests  
open to succession  
habitat for threatened endemic species



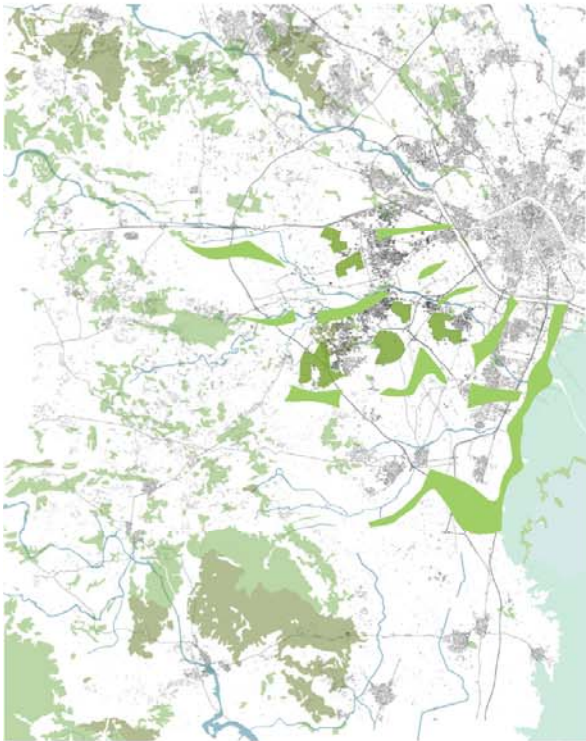
# BOSQUE LINEAL DE PINOS

## THE RESIN BUFFER

*permanent large scale structure to guide development*  
*protects water resources*  
secondary ecological corridor linkage  
wildlife habitat







THE TIMBER LANDS **BOSQUES MADERABLES**

*land bank to accommodate future development*  
encourages integration of new development with landscape  
timber products for local craft and trade

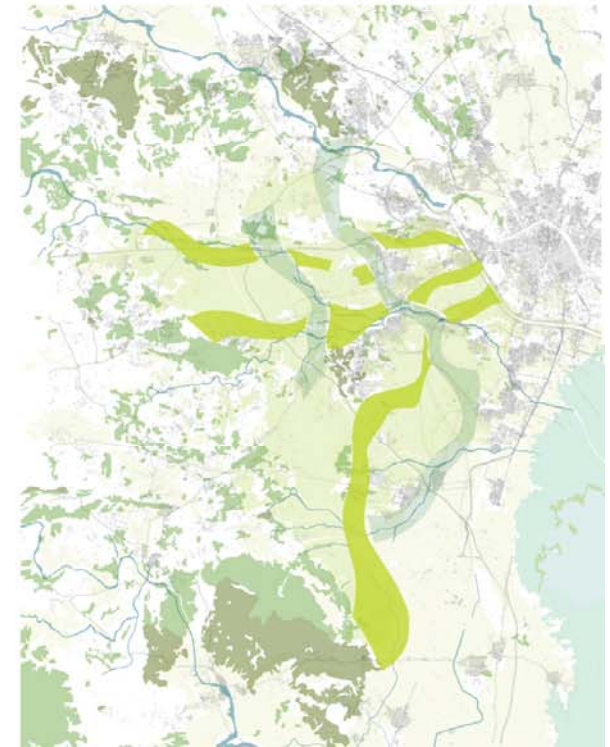
THE COPPICE TRACTS **BOSQUES ARBUSTIVOS**

*renewable, high yield, bio-energy resource*  
*connection to sea, preserves viewsheds*  
soil remediation, carbon sequestration, water conservation  
migratory bird habitat

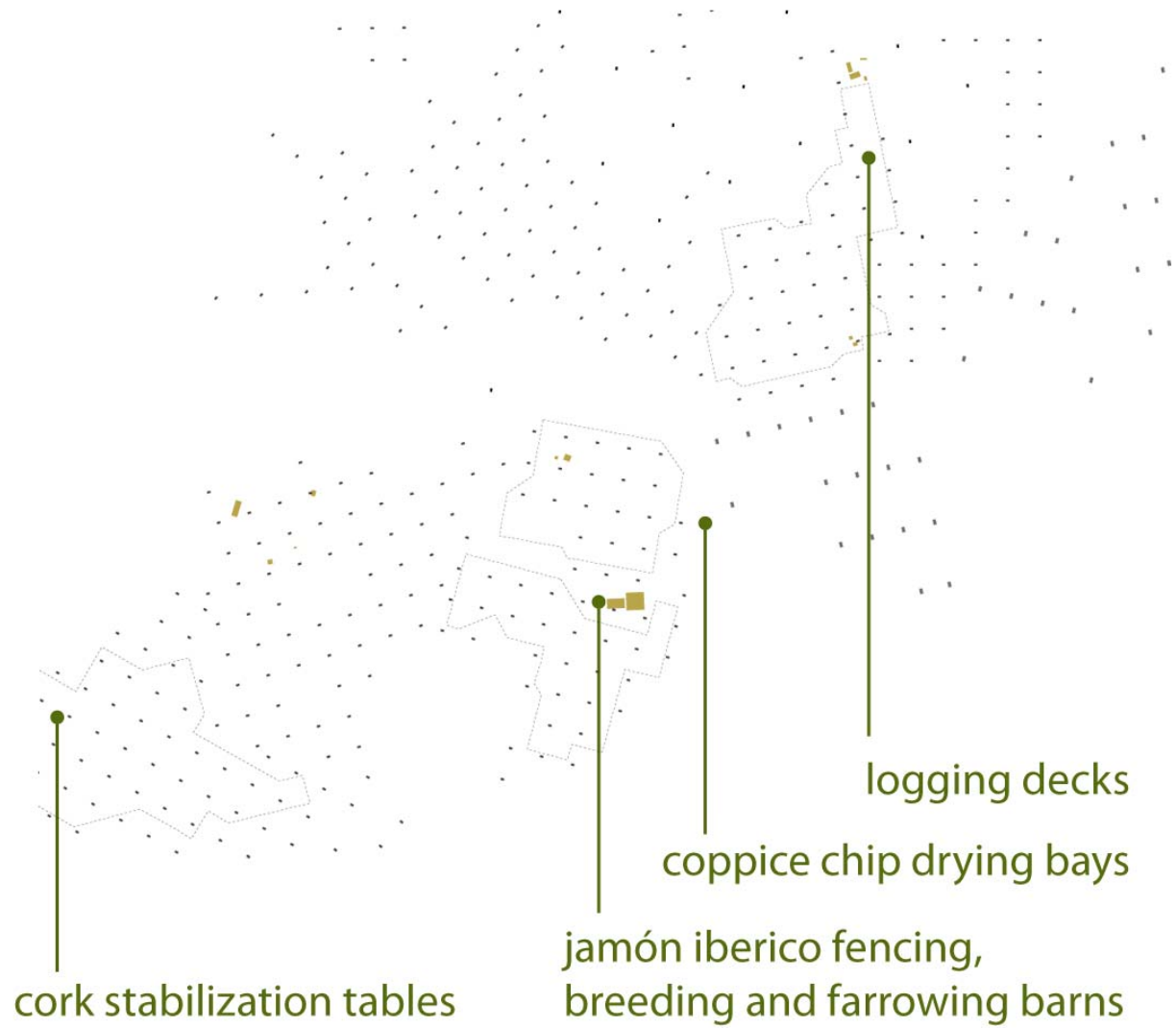
**LA DEHESA**

THE DEHESA

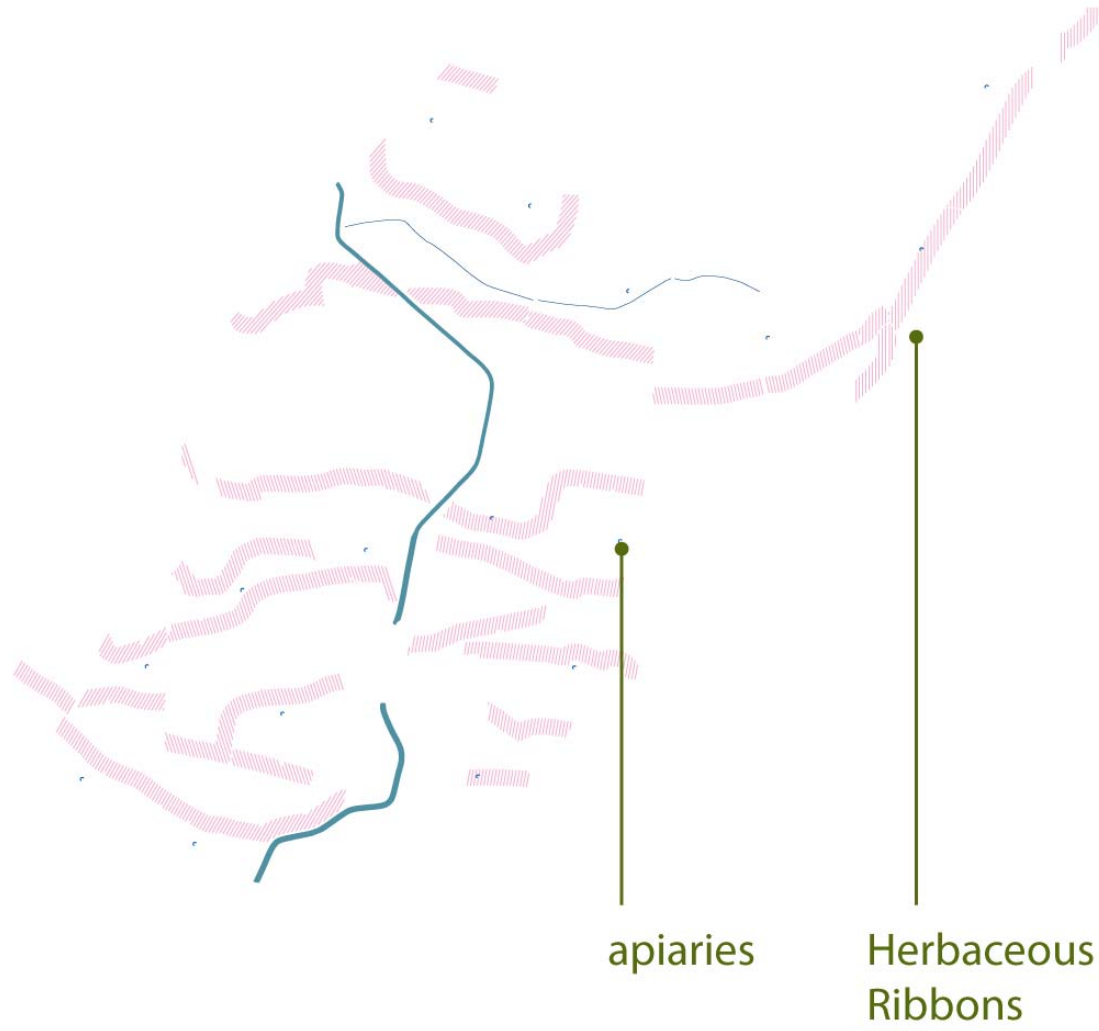
*increase structural and species diversity*  
*medium scale, multi-layered transitional form*  
intermediate scale to shift from huerta to development  
frames the historical huerta  
wildlife habitat  
protects water resources  
secondary guide to development



## PROGRAM & INFRASTRUCTURE: PRODUCTION



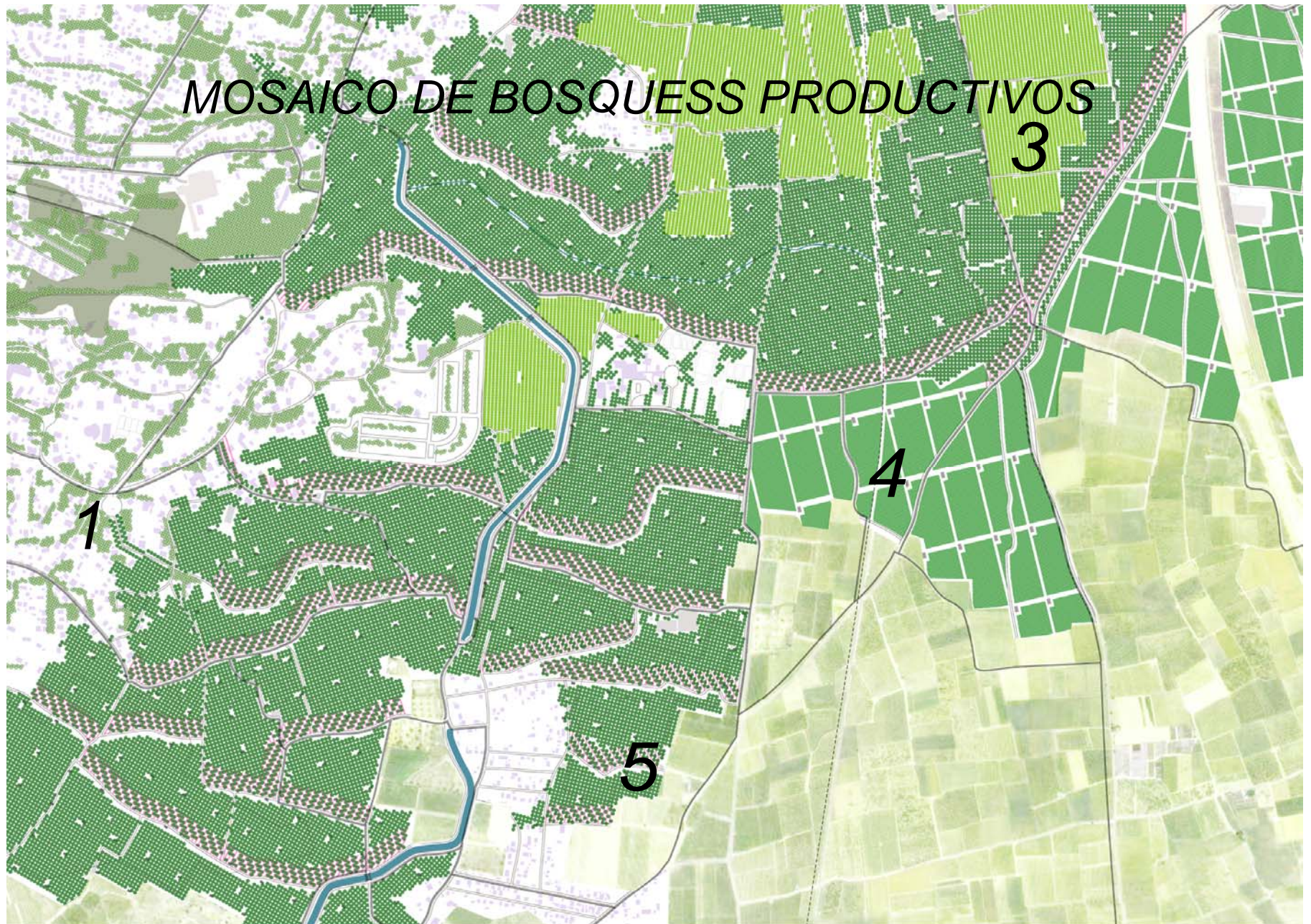
## PLANTING: SMALL SCALE PRODUCTION







# MOSAICO DE BOSQUES PRODUCTIVOS







## PROGRAM & INFRASTRUCTURE: RECREATION & TOURISM



tourist sites:  
historic alqueria and jardin

tent pads

visitor services