

Datos de biodiversidad. En que está ahora la Ciencia y GBIF

Francisco Pando

Unidad de Coordinación, nodo español
de GBIF (Global Biodiversity
Information Facility)



EUSKO JAURLARITZA
GOBIERNO VASCO

Foro Social de la Biodiversidad de Euskadi
Jornadas sobre Información de Biodiversidad y
Administraciones Ambientales. 2022



Ataria interpretazio zentroa / Centro de
interpretación Ataria
Vitoria-Gasteiz, 23-25 de noviembre de
2022





Qué vamos a ver

- GBIF en una diapositiva
- Como decíamos ayer...
- Principios FAIR
- La herramienta MERIT de Australia
- El TDWG
- La “World Flora Online”
- El Post-Darwin Core
- Algo de “Laboratorios virtuales”

GBIF | Global Biodiversity Information Facility

Free and open access to biodiversity data

2,251,592,561
Occurrence records

79,396
Datasets

7,992
Peer-reviewed papers using data

PUBLISHER | SINCE JULY 27, 2015

Basque Government

68,729 OCCURRENCES
33,648 HOSTED OCCURRENCES
25 DATASETS
109 CITATIONS

ABOUT
METRICS
HOME PAGE

www.gbif.org

Description: The Basque Government is the governing body of the Basque Autonomous Community of Spain. Its main responsibilities on nature and biodiversity are: • Creation of legally binding protected natural areas, • Definition, promotion and administration of Nature 2000 areas within the Basque Autonomous Community, • Planning of the high ecological valued and fragile ecosystems, • Administration and management of the Basque Catalogue of Threatened natural resources, • Elaboration of studies, plans and strategies for the plans for education, training and raising of awareness in matters of environment and public participation in this area.

Endorsed by: [GBIF Spain](#)

Installations: [Basque Government installation](#)

Administrative contact: [Marta Iturribarria](#)

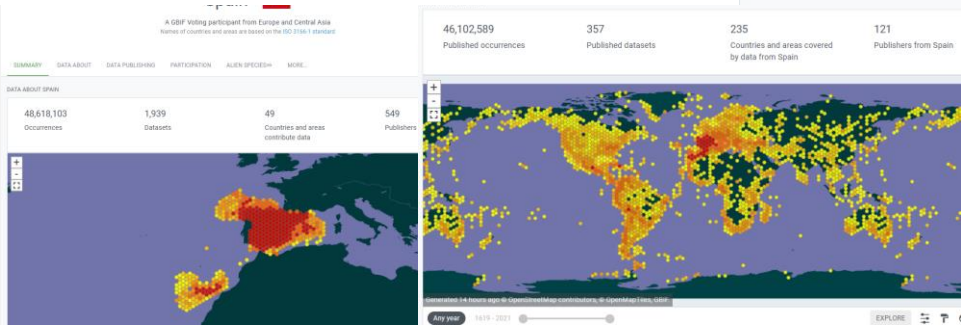
Technical contact: [Marta Iturribarria](#)

Aranzadi Ringing Scheme (bird ring-recovery data) Occurrence dataset

This data base consists of bird ring-recovery data from the Aranzadi Ringing Scheme (Aranzadi Sciences Society, Spain). Data have been compiled since 1950. For each record, you will find the following...

Published by Aranzadi Science Society

1,329,271 occurrences 86 citations



Portal de datos | IPT | eLearning | GBIF.ORG | @GbifEs | Buscar ...

Sobre GBIF.ES
Noticias y Eventos
Datos Biodiversidad
Formación
Colaboraciones
Software
Repositorio
Contacto

Taller GBIF.ES: Uso y aprovechamiento de los portales de biodiversidad de GBIF y nuestro entorno

IV Taller GBIF.ES online: Manejo y visualización de datos de biodiversidad en ecología (nivel inicial)

Webinar GBIF.ES: Estandarización y publicación de datos biológicos a largo plazo (LTER)

Most popular courses

Estándarización y publicación de datos biológicos a largo plazo (LTER)

5 estrellas

Taller online GBIF.ES: Manejo y visualización de datos de biodiversidad en ecología (nivel inicial)

5 estrellas

Webinar GBIF.ES: Estandarización y publicación de datos biológicos a largo plazo (LTER)

5 estrellas

www.gbif.es

Recursos alojados disponibles a través de este IPT

Logo	Nombre	Organización	Tipo	Subtipo	Registros	Última modificación	Última publicación
	Colección de Artrópodos de la Asociación BIGA para el estudio del patrimonio natural de Galicia: ABIGA	Colecciones naturales de la Asociación BIGA para el estudio del patrimonio natural de Galicia: FBIGA y ABIGA.	Registros biológicos	--	8.486	2021-10-27	2021-10-27
	Herbarium of Vascular Plants Collection of the University of Extremadura (Spain)	Dep. Biology and Plant Production, Univ. Extremadura	Registros biológicos	--	36 169	2021-10-27	2021-01-07
	Colección de referencia de otolitos, Instituto de Ciencias del Mar-CSIC	Institute of Marine Sciences (ICM-CSIC)	Registros biológicos	--	7.924	2021-10-09	2021-07-28
--	Natusfera. iNaturalist en España	GBIF-Spain	Solamente metadatos	--	0	2021-10-08	2021-07-29
	Freshwater samples in MZNA-INV-FRW: Macroinvertebrate samples from the water quality monitoring network along the Ebro Basin	University of Navarra – Department of Environmental Biology, AMBIUN	Evento de muestreo	--	1.776	2021-10-07	2018-11-30
	Effects of elevation gradient and aspect on cat diversity on Galicica Mountain in the Republic of Macedonia (south-eastern Europe)	No registrado	Registros biológicos	--			

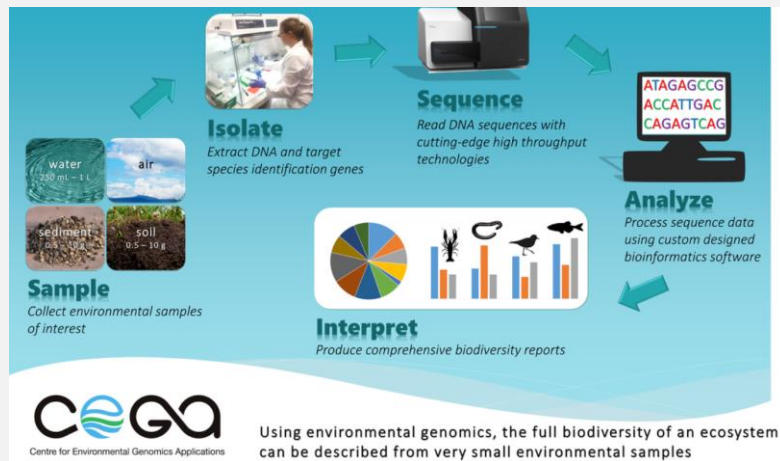
412 data sets.

Como decíamos ayer...

Muestreos basados en ADN ambiental

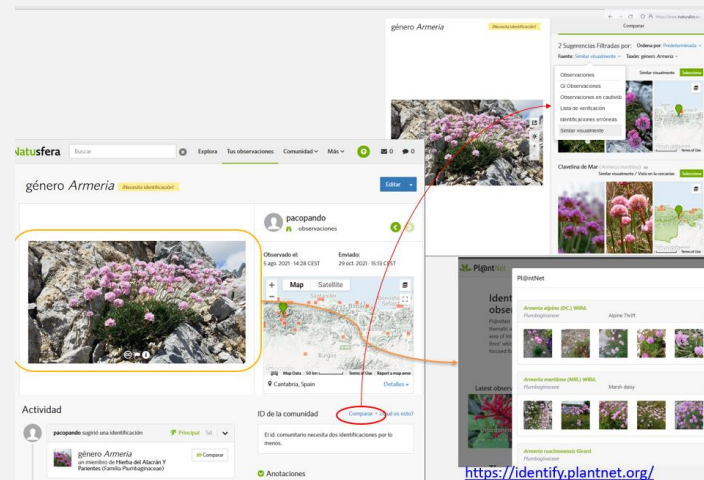
Ciencia ciudadana e inteligencia artificial

Identificadores “de largo alcance”



<https://www.cegacanada.com/about.html>

https://www.euskadi.eus/contenidos/evento/forobiodiversidad21/es_de_adjuntos/Foro-Euskadi-2021-Pando.pdf



<https://identify.plantnet.org/>

839C9EDF-13DD-4658-B740-228FB8DDA44E

Término	Interpretado
Número de catálogo	91736-1
Conteo de individuos	1
ID del registro	839C9EDF-13DD-4658-B740-228FB8DDA44E
Estado del registro biológico	PRESENT
Registrado por	Ángel Pintos

33.944 REGISTROS 444 CITAS

444 citas

Principios FAIR





Australian Government

MERIT

¿Qué es el MERIT?

Es la herramienta de informes en línea del Departamento de Agricultura, Agua y Medio Ambiente. MERIT está diseñado para recopilar y almacenar datos de planificación, monitoreo y generación de informes asociados con proyectos de subvenciones de gestión de recursos naturales financiados por el gobierno australiano.

<https://fieldcapture.ala.org.au/merit>



Monitoring, Evaluation, Reporting and Improvement Tool (MERIT)

The online monitoring, evaluation, reporting and improvement tool (MERIT) is now available for grant recipients to start reporting. MERIT has been developed for the project and programme reporting requirements of Australian Government NRM programmes. MERIT allows grant recipients to record and upload data about the progress of their projects on a continual basis and to submit reports online. It will also increase information sharing within NRM communities and the broader public.

Developed in collaboration with the *Atlas of Living Australia*, MERIT will enhance the reporting process by allowing simpler yet more complete project records and showing direct links between project activities and contributions to Australia's biodiversity conservation work.

ANNOUNCEMENTS

- MERIT users guides are now available at <http://www.nrm.gov.au/funding/merit/user-guides.html>. Please check the guides and FAQ's for information on how to use MERIT.
- For important information regarding the upload of shape files and for new features and fixes that were deployed on 17/8/14 see '[About](#)' for details.
- A new sample project has been added to assist users in interpreting activity types and communicating their project to the public. View the [sample project](#) (opens in a new tab)

Filter results

Organisation

- East Gippsland CMA (14)
- Fitzroy Basin Association Inc. (12)
- South Coast NRM (10)
- Corangamite Catchment Management Authority (10)
- REEF CATCHMENTS (MACKAY WHITSUNDAY ISAAC) Limited (8)
- choose more...

Program

- Caring for Our Country 2 (428)
- Biodiversity Fund (349)
- Cumberland Plain (8)
- Environmental Stewardship (2)
- Green Army (1)

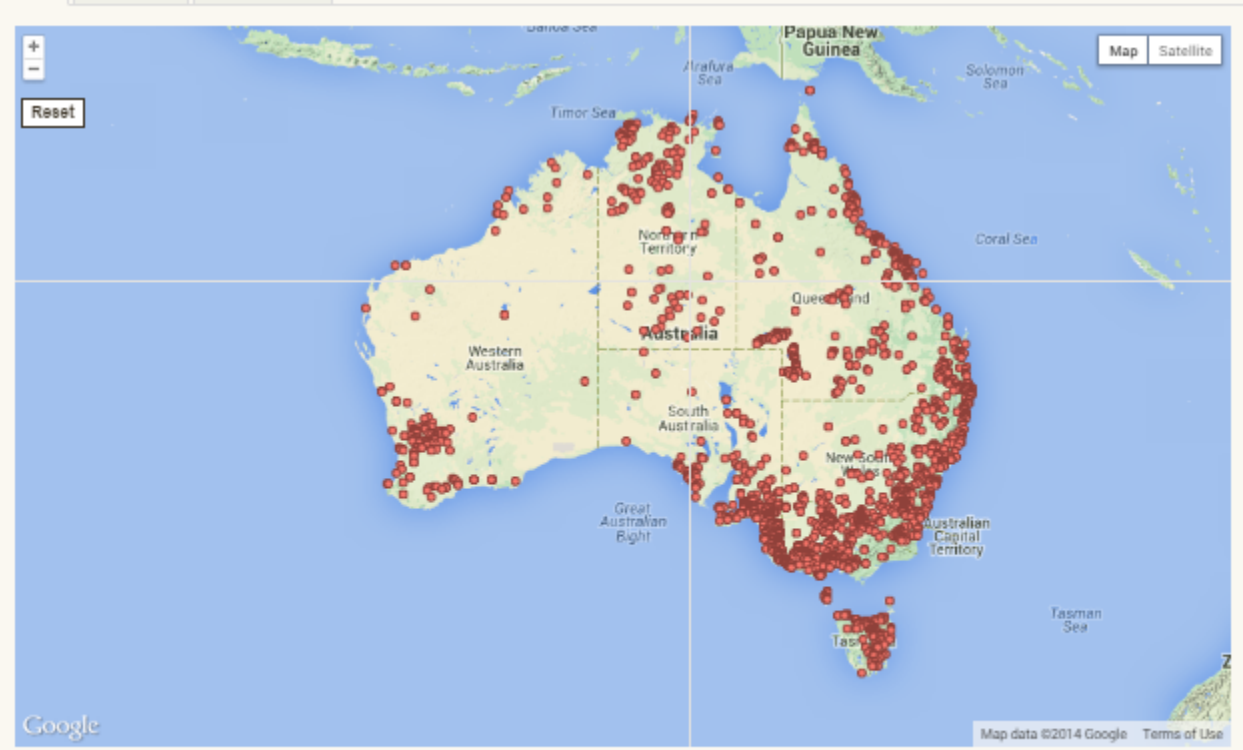
Sub Program

- Round 1 (313)
- Regional Delivery 1318 (309)
- Community Environment Grants 1314 (89)
- Reef Rescue 2013/14 (27)
- Target Area Grants - 2013/14 (22)
- choose more...

Reporting Theme

- Protecting and enhancing existing native vegetation (250)
- Managing invasive species in a connected landscape (230)
- Biodiverse plantings (198)
- Building natural resource management community skills, knowledge and engagement (138)
- Conserving and protecting species and ecosystems (matters of national

Map Projects Dashboard



788 projects with 3770 sites

Filter results

Organisation

- East Gippsland CMA (14)
- Fitzroy Basin Association Inc. (12)
- South Coast NRM (10)
- Corangamite Catchment Management Authority (10)
- REEF CATCHMENTS (MACKAY WHITSUNDAY ISAAC) Limited (8)

👉 choose more...

Program

- Caring for Our Country 2 (430)
- Biodiversity Fund (349)
- Cumberland Plain (6)
- Environmental Stewardship (2)
- Green Army (1)

Sub Program

- Round 1 (313)
- Regional Delivery 1318 (309)
- Community Environment Grants 1314 (69)
- Reef Rescue 2013/14 (27)
- Target Area Grants - 2013/14 (22)

👉 choose more...

Reporting Theme

- Protecting and enhancing existing native vegetation (254)
- Managing invasive species in a connected landscape (232)
- Biodiverse plantings (200)
- Building natural resource management community skills, knowledge and engagement (136)
- Conserving and protecting species and ecosystems (matters of national environmental significance) (132)

👉 choose more...

State

- New South Wales (including Coastal Waters) (186)
- Queensland (including Coastal Waters) (163)
- Victoria (including Coastal Waters) (116)
- South Australia (including Coastal Waters) (94)
- Western Australia (including Coastal Waters) (78)

<https://help.capture.ala.org.au/?&q=associatedProgramF...>

Map

Projects

Dashboard

Data presented in this dashboard has been extracted from grant recipient progress reports approved by the Department of the Environment. While efforts are made to ensure the accuracy of the ecological information contained in MERIT, for confirmation of authoritative data please contact the /home/contacts. Also note that dashboard data for Biodiversity Fund Round One are incomplete due to legacy issues.

Biodiversity Management

Community Engagement and Capacity Building

Farm Management Practices

Heritage Asset Management

[no data available]

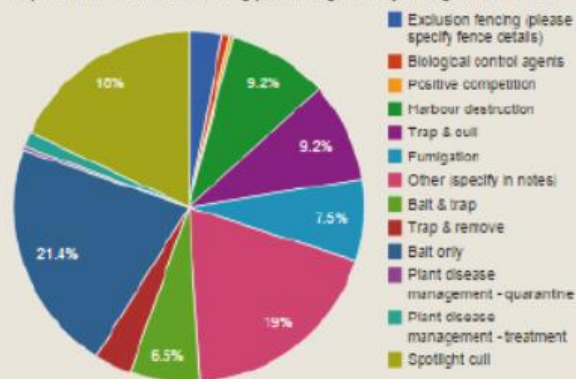
Indigenous Capacity

Invasive Species Management - Pest Animals

Pest Management Details

No. of activities undertaking pest management : 0

Proportion of activities undertaking pest management by management method



Area covered (Ha) by pest treatment : 7,483,721.88

Treated area (Ha) by species

www.ala.org.au


TDWG 2022 - a Hybrid Conference

Stronger Together: Standards for linking biodiversity data

conference

Image by Ivan Nedelch

 / [Conferences](#) / TDWG 2022 - a Hybrid Conference

 [Edit this page](#)

TDWG 2022

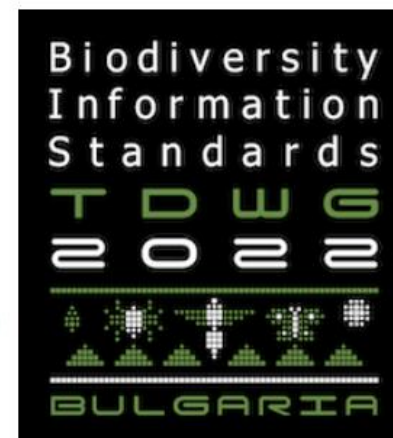
17–21 October

Last updated 16 October 2022

The Biodiversity Information Standards (TDWG) annual conference in 2022 will be a hybrid meeting, hosted in Sofia, Bulgaria.

Stronger together - in person or online! #tdwg2022

Although pandemic restrictions appear to be waning in many countries, we expect that many organizations will still be limiting professional travel in the fall of 2022. Consequently, TDWG 2022 will be a hybrid conference; in-person for those who can travel, and virtual for those who cannot. The conference will accommodate symposia, workshops,



[Conference notifications](#)

[Deadlines](#)

[Registration](#)

[Schedule](#)

[Working Sessions](#)

[Abstracts](#)

[Hosts and in-person logistics](#)

[Supporters](#)

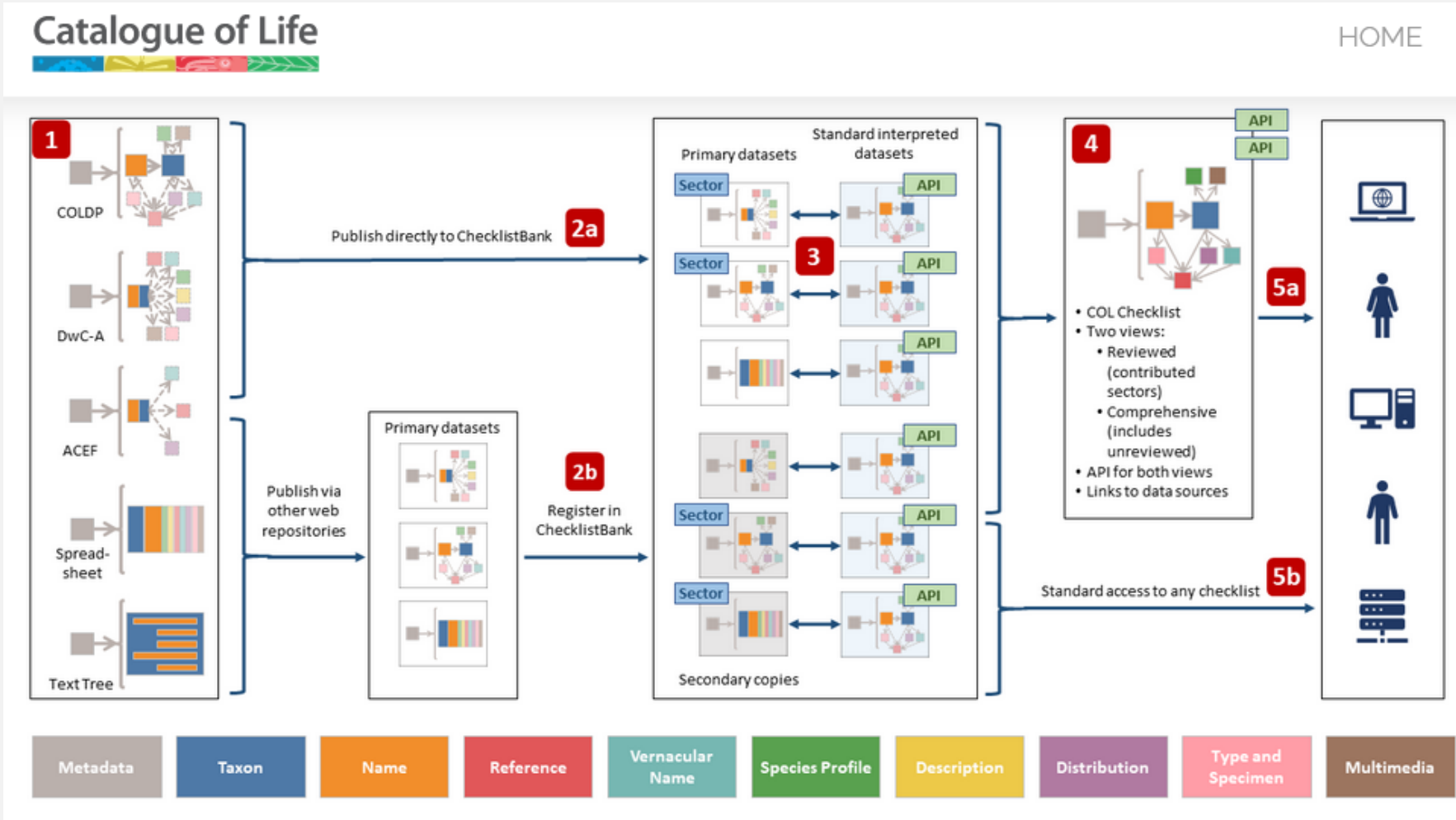
[Code of Conduct](#)

[Contact Us](#)

[Additional Information](#)

<https://www.tdwg.org/conferences/2022/>

“CheckListBank”



INSTALLATION

COL Checklist Bank

Catalogue of Life Checklist Bank hosts original archives and downloads in various formats.

Installation type: Http installation
Hosted by: The Catalogue of Life Partnership
Registered: September 7, 2021

169 DATASETS

- The World Checklist of Vascular Plants (WCVP): Fabaceae** Checklist dataset
 The World Checklist of Vascular Plants (WCVP) is a global consensus view of all known vascular plant species (flowering plants, conifers, ferns, clubmosses and firmosses). The Fabaceae subset contains...
- Global Lepidoptera Index** Checklist dataset
 Global Lepidoptera Index is a revised dataset based on the Global Lepidoptera Names Index (LepIndex), a digitised and updated version of the unique index card archive to the scientific names of the li...
- Catalogue of World Gelechiidae** Checklist dataset
 The Catalogue of World Gelechiidae derives from a summary of the Gelechiidae list developed and maintained as a Word document by Klaus Sattler at the Natural History

<https://www.catalogueoflife.org/about/colpipeline>

<https://www.gbif.org/installation/3298f964-ee79-44d3-9ac3-4236aa62c5f9>

Explore the data

Find out about

Check a plant name

WFO

The World Flora Online



[Browse Classification](#)

[Browse Images](#)

[Contribute Data](#)

[Download Data](#)

[Sign in](#)

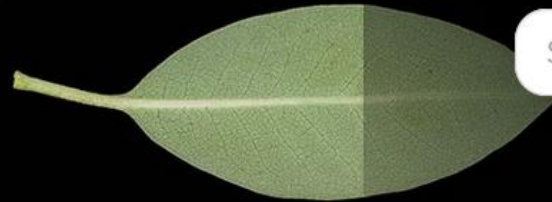
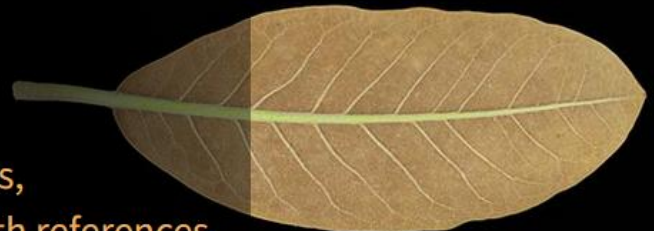
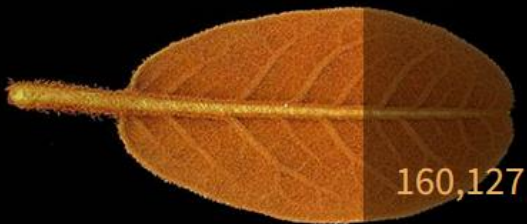
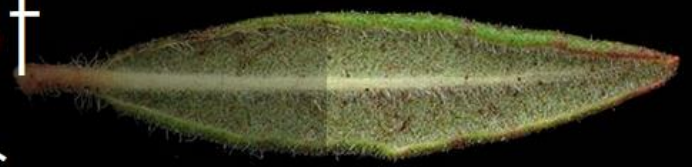
An Online Flora of All Known Plants

Supporting the Global Strategy for Plant Conservation

1,422,002 names, 381,959 from accepted species, 57,419 images, 160,127 names with descriptions, 36,166 with distributions and 182,001 with references.

Search by species, genus or family name, or any words describing the plant

🔍 Search



Diversifying the GBIF Data Model

“estudios de casos e ideas actuales para un modelo común unificado capaz de admitir capacidades ampliadas de publicación de datos, así como direcciones potenciales para la evolución del estándar Darwin Core.”

Darwin Core quick reference guide

This document is intended to be an easy-to-read reference of the currently (as of 2021-07-15) recommended terms maintained as part of the [Darwin Core standard](#) and

Record-level Terms	Dublin Core terms, institutions, collections, nature of data record	Simple Darwin Core (flat)
Occurrence	evidence of species in nature, observers, behavior, associated media, references.	
Event	sampling protocols and methods, date, time, field notes	
Location	geography, locality descriptions, spatial data	
Identification	linkage between Taxon and Occurrence	
Taxon	scientific names, vernacular names, names usages, taxon concepts, and the relationships between them	
GeologicalContext	geologic time, chrono-stratigraphy, biostratigraphy, lithostratigraphy	
ResourceRelationship	explicit relationships between identified resources (e.g., one organism to another, taxon to location, etc.)	Generic Darwin Core (relational)
MeasurementOrFact	measurements, facts, characteristics, assertions, references	

<https://dwc.tdwg.org/terms>



Taxonomic checklist



eDNA metabarcoding



Camera trap



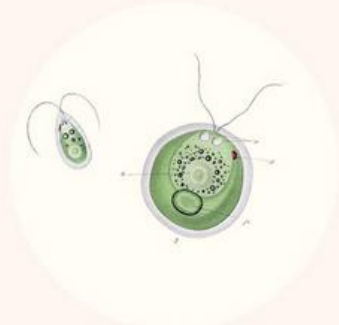
Tissue samples



Environmental and community measurements



Automatic moth trap



Global malaise programme



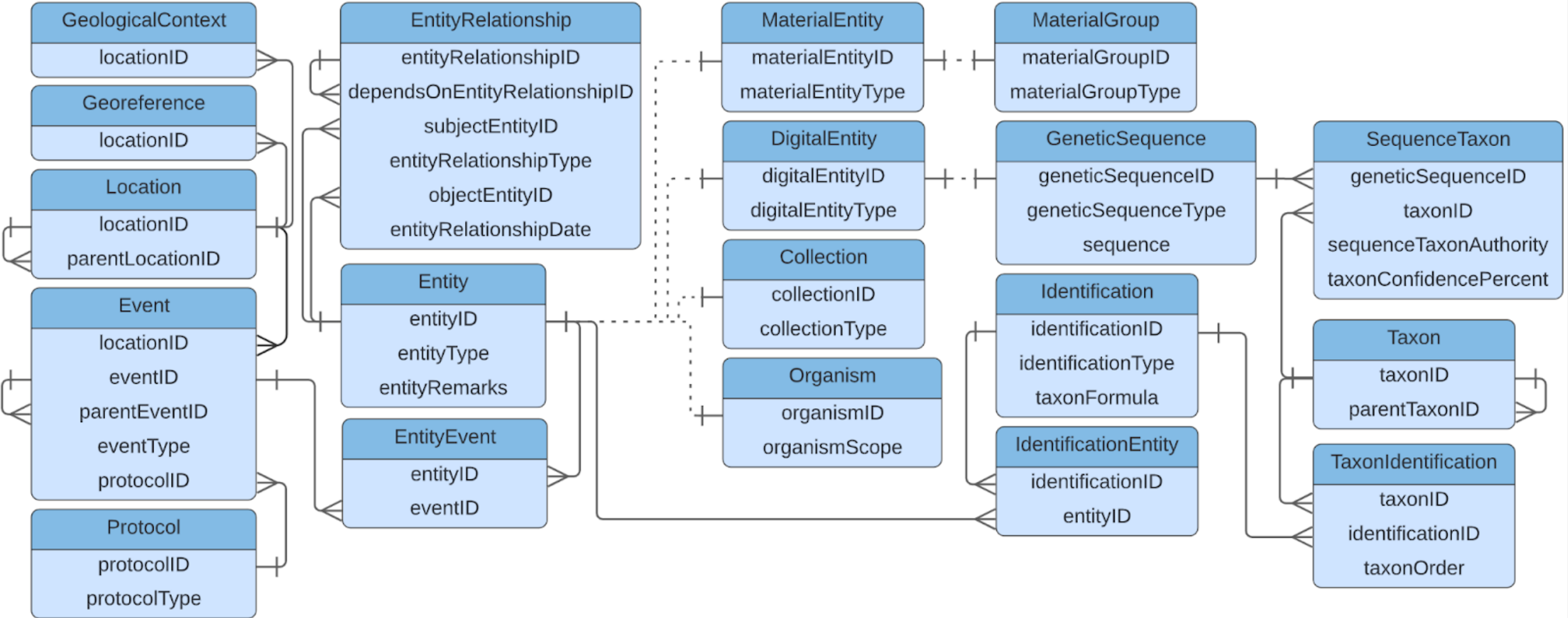
iNaturalist



Specimens with media



Ecological survey data exchange specification



De los portales de datos a los VRE

- Wikipedia > “...an online system helping researchers collaborate. Features usually include **collaboration** support (Web forums and wikis), document hosting, and some discipline-specific **tools**, such as **data** analysis, visualisation, or simulation management.”
- VRE = VLABs = Entornos virtuales de investigación = Laboratorios virtuales

- Por tanto, además de datos, hablamos de métodos, herramientas, visualizaciones, *workflows* (código)

Ejemplo

<https://espacial.gbif.es/#>



Datos de biodiversidad
(observaciones-
distribución)

Capas ambientales
(Clima)

Polígonos (ENP)s

Algoritmos

Reutilizable (“llave en
mano”)

Utilidades Importar Exportar Ayuda

- Tetraclinis articulata (World)
- WorldClim 10m Max Temperature of Warmest Month
- Espacios Naturales Protegidos
- WorldClim 10m Annual Precipitation
- Tetraclinis articulata (World)

Opciones de mapa
Editar opciones de capa

Eliminar selección Descargar datos Descargar imagen

Tetraclinis articulata (World)

WorldClim 10m Max Temperature of Warmest Month	WorldClim 10m Annual Precipitation
29.469499588012695	405.0

Reino: Plantae
Familia: Cupressaceae
Proveedor de datos: GBIF ES IPT
Latitud & Longitud: 40.4118,-3.6801
Creado: 08 / 2020

Assign record to ad hoc group
Add occurrences to adhoc

Ver registro Lista de registros en este momento

Enlaces rápidos

- Ver metadatos para Tetraclinis artic...
- Ver metadatos para Rabat, O.E.
- Add occurrences to map
- Add area to map
- Add layer to map
- Add facet to map

Francisco Pando

GBIF.ES, Unidad de Coordinación
Real Jardín Botánico - CSIC
Plaza de Murillo, 2
28014 Madrid, Spain

pando@gbif.es



<https://creativecommons.org/licenses/by/4.0/deed.es>



Carlos de Mier. https://www.myxotropic.org/comatricha-2/#gallery_fancybox_10026-1