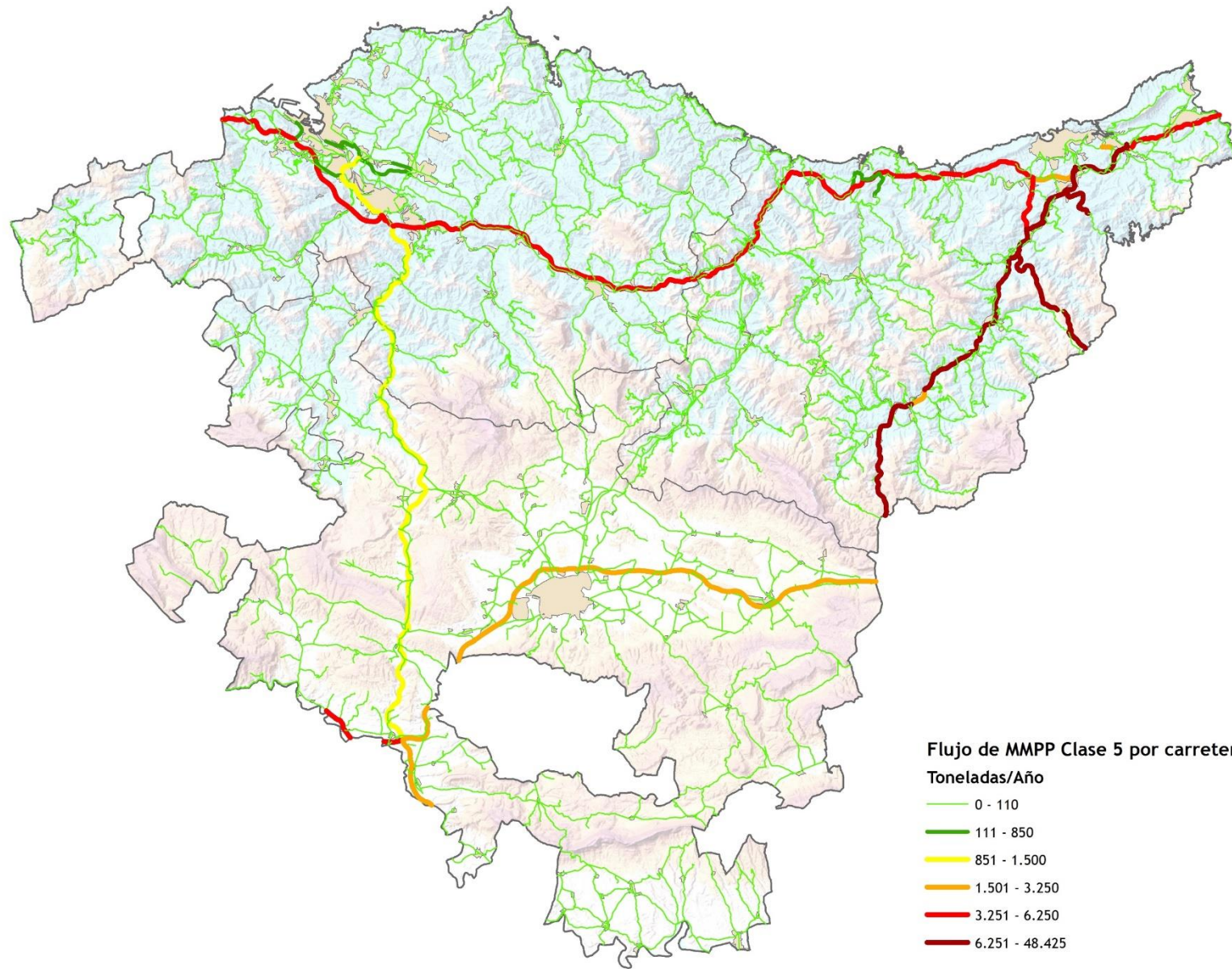


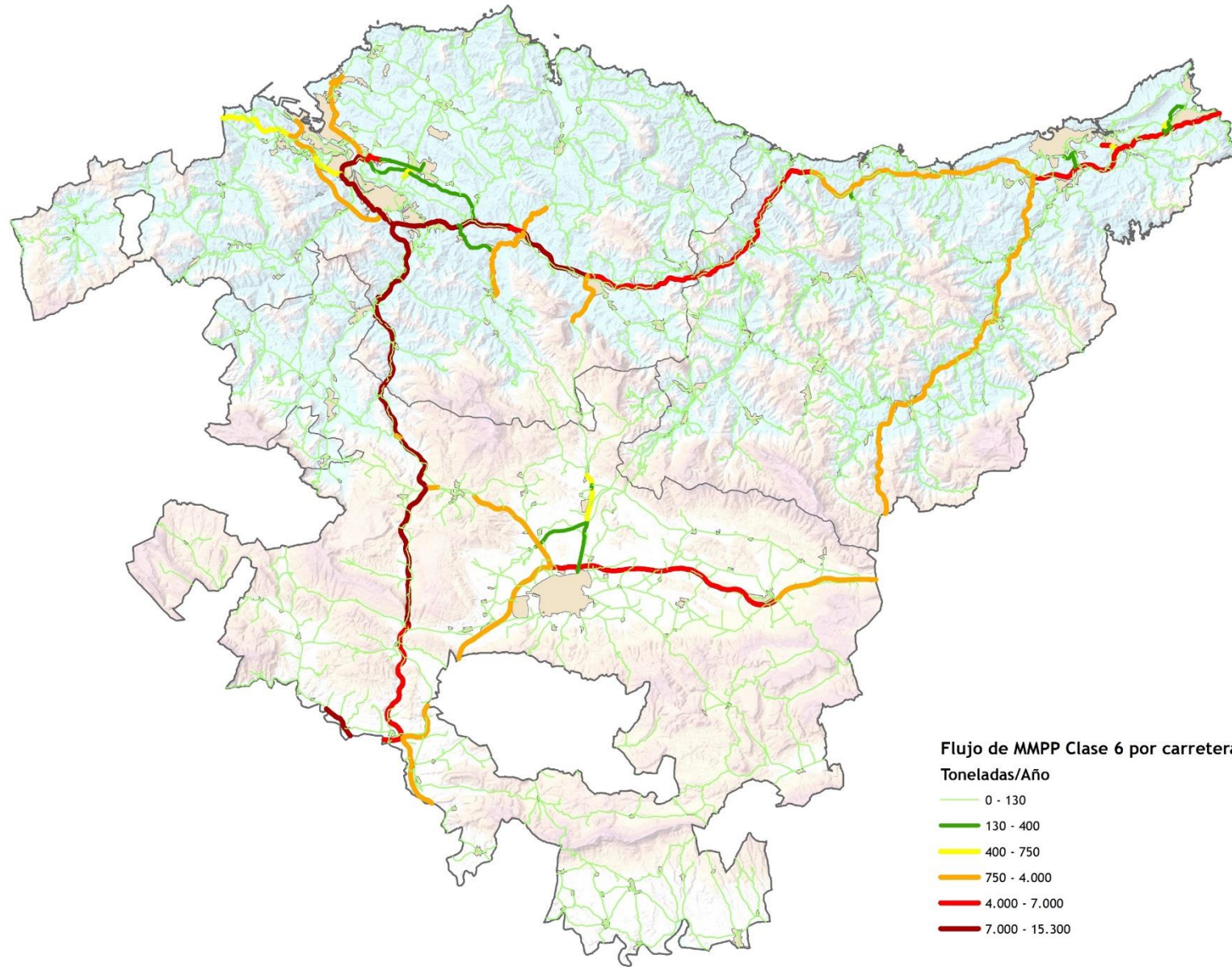
**Flujo de MMPP Clase 4 por carretera 2013**

- Toneladas/año**
- 0 - 240
  - 241 - 1.200
  - 1.201 - 3.350
  - 3.351 - 7.700
  - 7.701 - 15.000
  - 15.001 - 60.750



**Flujo de MMPP Clase 5 por carretera 2013**  
Toneladas/Año

- 0 - 110
- 111 - 850
- 851 - 1.500
- 1.501 - 3.250
- 3.251 - 6.250
- 6.251 - 48.425

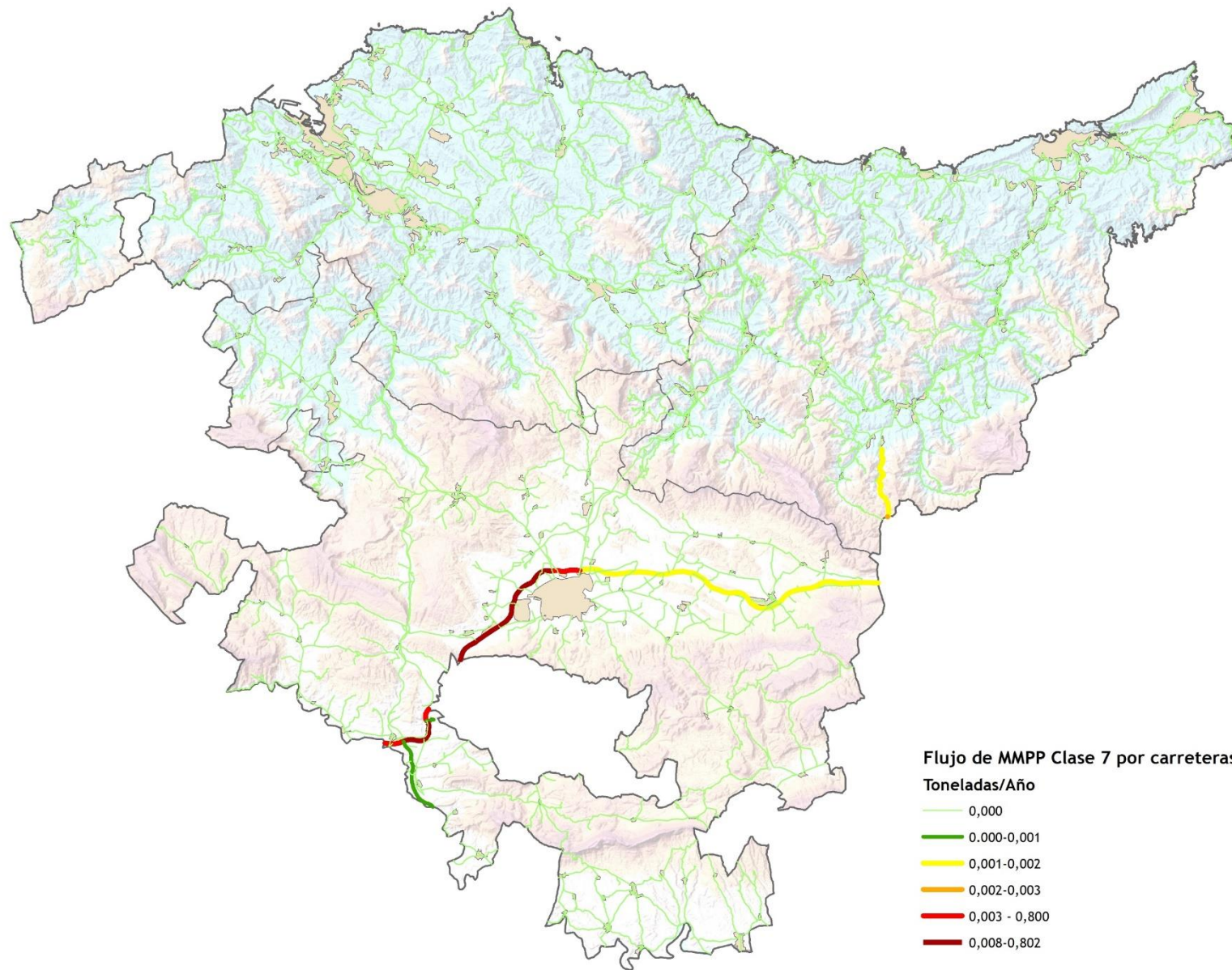


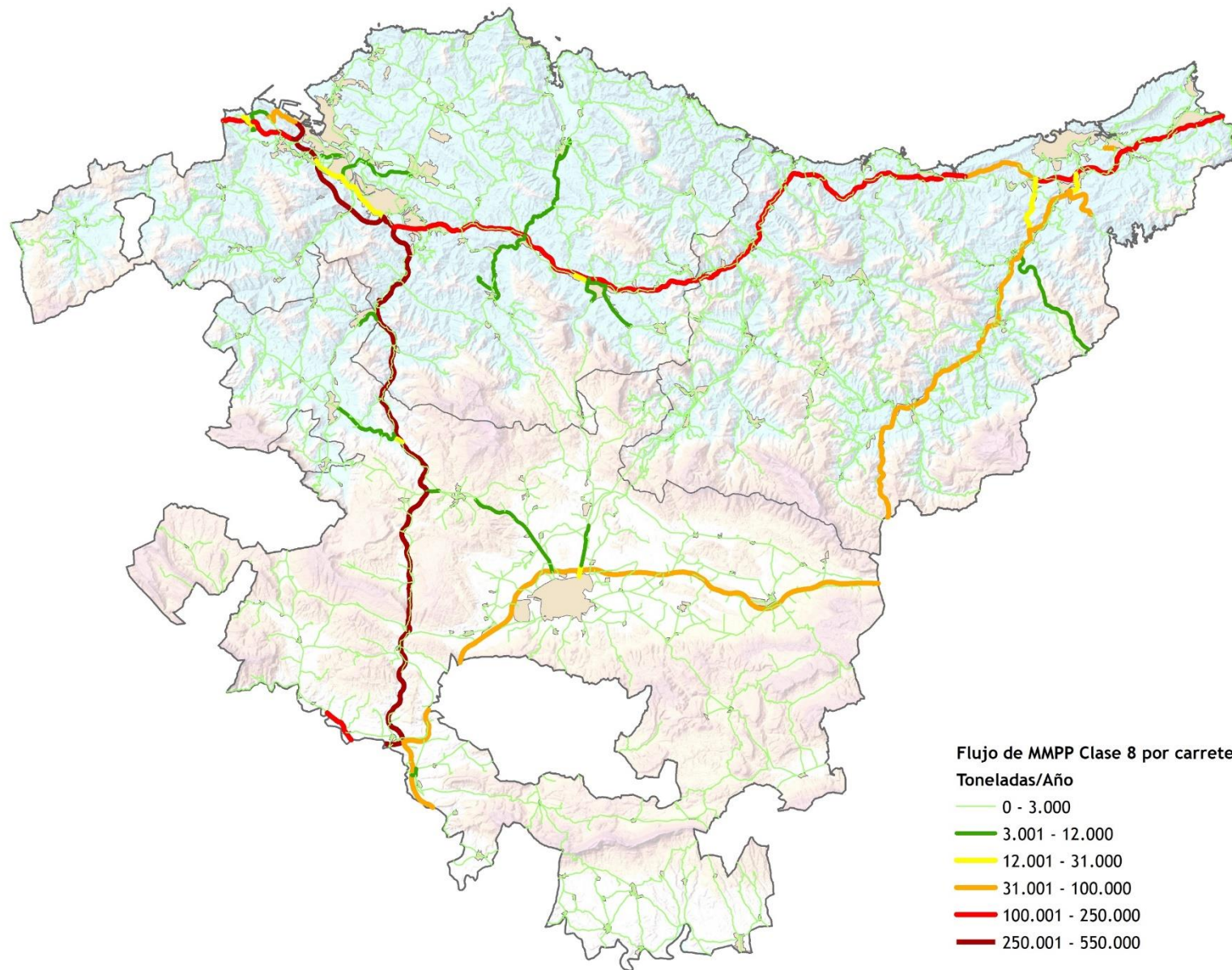
Flujo de MMPP Clase 6 por carreteras 2013

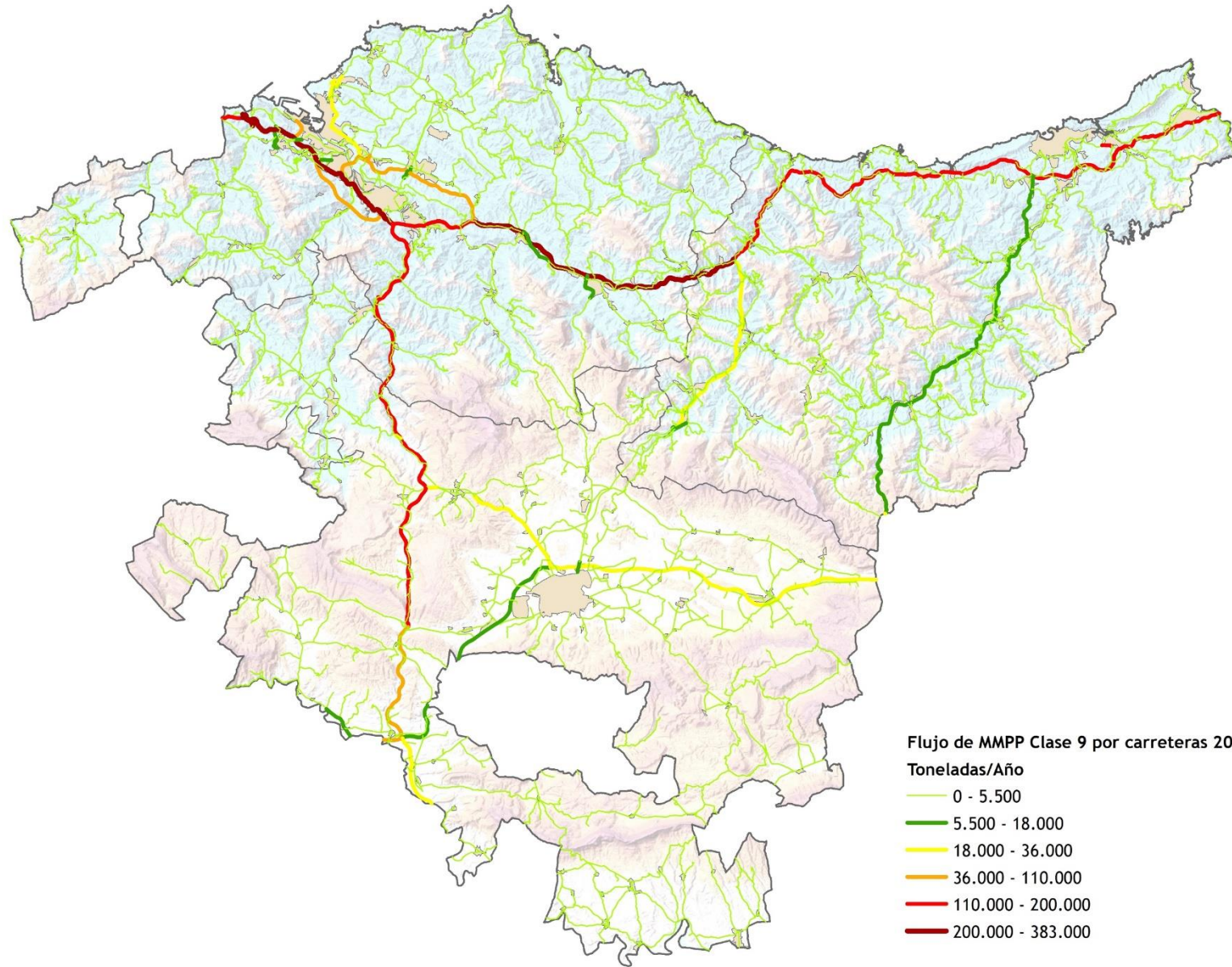
Toneladas/Año

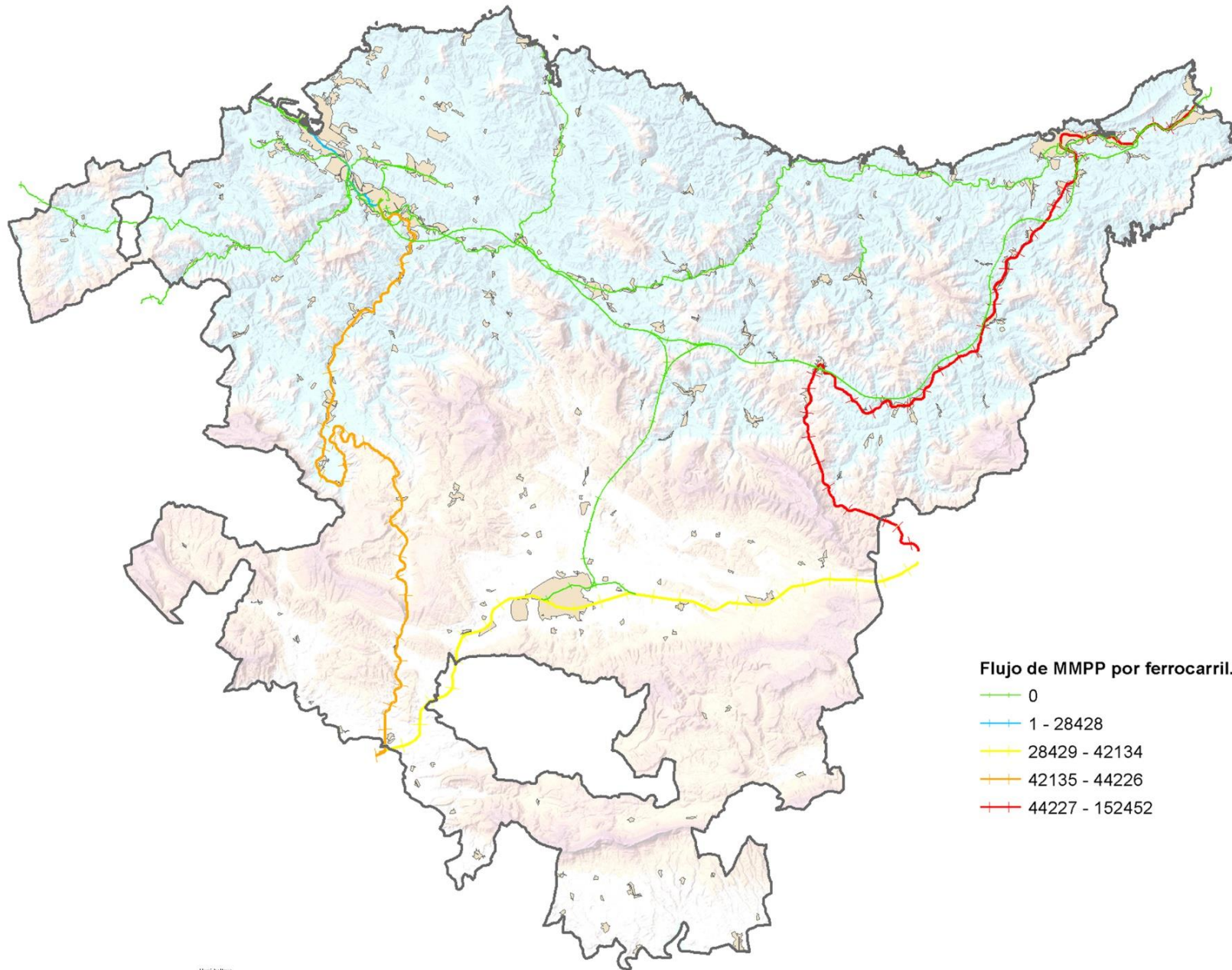
- 0 - 130
- 130 - 400
- 400 - 750
- 750 - 4.000
- 4.000 - 7.000
- 7.000 - 15.300











Flujo de MMPP por ferrocarril. Toneladas/año

- 0
- 1 - 28428
- 28429 - 42134
- 42135 - 44226
- 44227 - 152452