

Fredrik Björk, Malmö University & Ulf Kyrling, Region  
Skåne

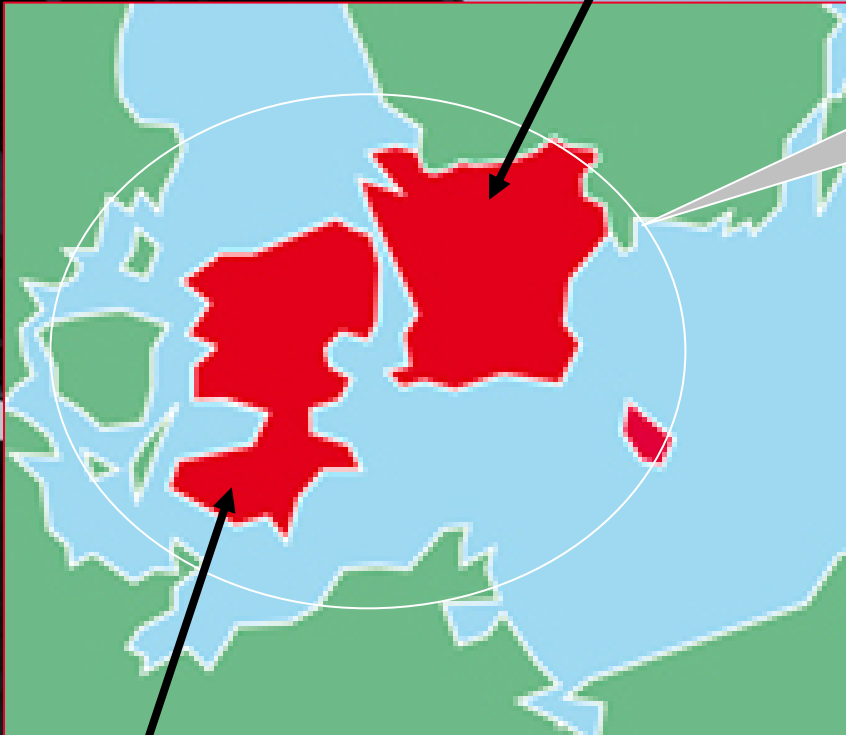
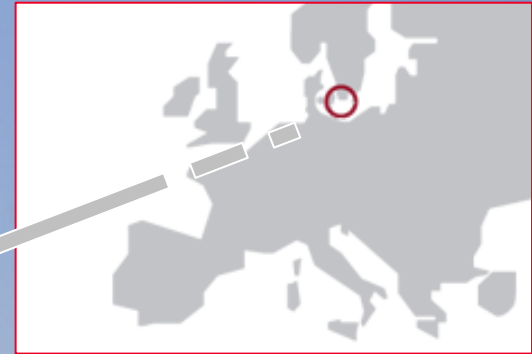
# ØRESUND: A CITY-REGION BETWEEN DENMARK AND SWEDEN

- Teacher in Environmental Science, Social entrepreneurship & innovation, urban development
- Academic background: History
- Research coordinator @ *Forum for Social Innovation* (Sweden)
- Research & Communication @ *Institute for Urban History*

# Malmö university

- Soon 15 years old
- c. 25 000 students
- Important focus areas: Health and society (public health), Learning and society (teacher education), Culture and society (urban development & social innovation)
- Host *Forum for Social Innovation* (Financed by Ministry for Industry, Region Skåne and Malmö University)

Skåne  
Sweden



Sealand  
Denmark

## the Öresund region

- Cross-border region including the Capital region of Denmark (Copenhagen)
- 3.5 million inhabitants





# Facts

- 3,7 million people
- 20 000 people commute every day across the national border
- A bridge between Malmö and Copenhagen (since 2000) with regular train service every 20 minutes (c. 20 000 vehicles and 30 000 train passengers every day)
- Ferry between Helsingborg and Helsingør
- Airports: Kastrup (Copenhagen); Sturup (outside Malmö) *From Malmö City to*

# The Øresund Region

- Political History: Denmark until 1653; then Sweden claimed the eastern part (Skåne)
- War and hostilities until 1815
- Culture & economy: trade and other socio-cultural connections continued all the time (even when at war!)
- Late 1800s and 1900s: Nation building in both Denmark and Sweden shifted focus from *region* to *nation*

# The new regionalism

- ⦿ A new beginning - mid 60s
- ⦿ *Border trade* – ferries across Øresund became cheaper and quicker (25 minutes across Helsingør-Helsingør)
- ⦿ *Television* – Danish TV could be seen in Skåne and Swedish Television in Eastern Denmark
- ⦿ *Political vision*: about "Ørestad", a transnational city-region, and about a bridge!



# Øresund as city-region



# Collaborative organizations

- *The Øresund Committee* - the official platform for regional political cooperation between Skåne (Sweden) and Zealand (Denmark) since 1993.
- *The Öresund University* – (1997-2012) – a collaboration between nine Universities in the region: all together 165 000 students (incl. Malmö, Lund, Copenhagen and Roskilde Universities)

# Lessons of Øresund integration— of success and failiure

- *Infrastructure coordination/collaboration:*  
Railways, ports, airports etc.
- *Common visions:*  
"What can we gain from...?"
- *Collaboration on several levels:*  
It's not *enough* to have meetings  
between high-ranking politicians,( but it  
is necessary). Collaboration needs to  
take place on "street-level".


# More Lessons...

- *You can't "program" a sense of community*
- The power of the citizen – cross-border everyday activities (news reporting, shopping, commuting)
- *Don't underestimate asymmetric power relations*  
Malmö more interested than Copenhagen, Nation states not interested....
- *Patience....* there must be a kind of 'sync' between citizen and high politics



# Challenges and opportunities for cross-border integration

- Many legal difficulties still in place
- Global economic crisis
- Skåne: Low income, low level of education etc.
- Political populism (Danish People's Party)
- No way back (the bridge cannot be 'unbuilt')
- Main industries and economic sectors in Øresund region are strong/growing (Biotech/ICT/Tourism/Food etc.



Supporting  
Social Innovation in Skåne &  
the Öresund Region  
from a regional point of view



Ulf Kyrling  
Region Skåne  
Dep. of Economic Development&Innovation  
Social Innovation  
Rural Development



## Region Skåne

### Regional council of Skåne

- Self-governing body of Skåne
- 149 elected members
- Annual budget: 4 billion euro

### Region Skåne responsible for

- Public health care (90 %)
- Public transport (5 %)
- Regional development (4 %)
- Culture (1 %)
- 32 000 employees, mostly in health care sector

### Regional development

- Decides on strategy for regional development
- Coordinates its implementation
- Allocates national and EU funds

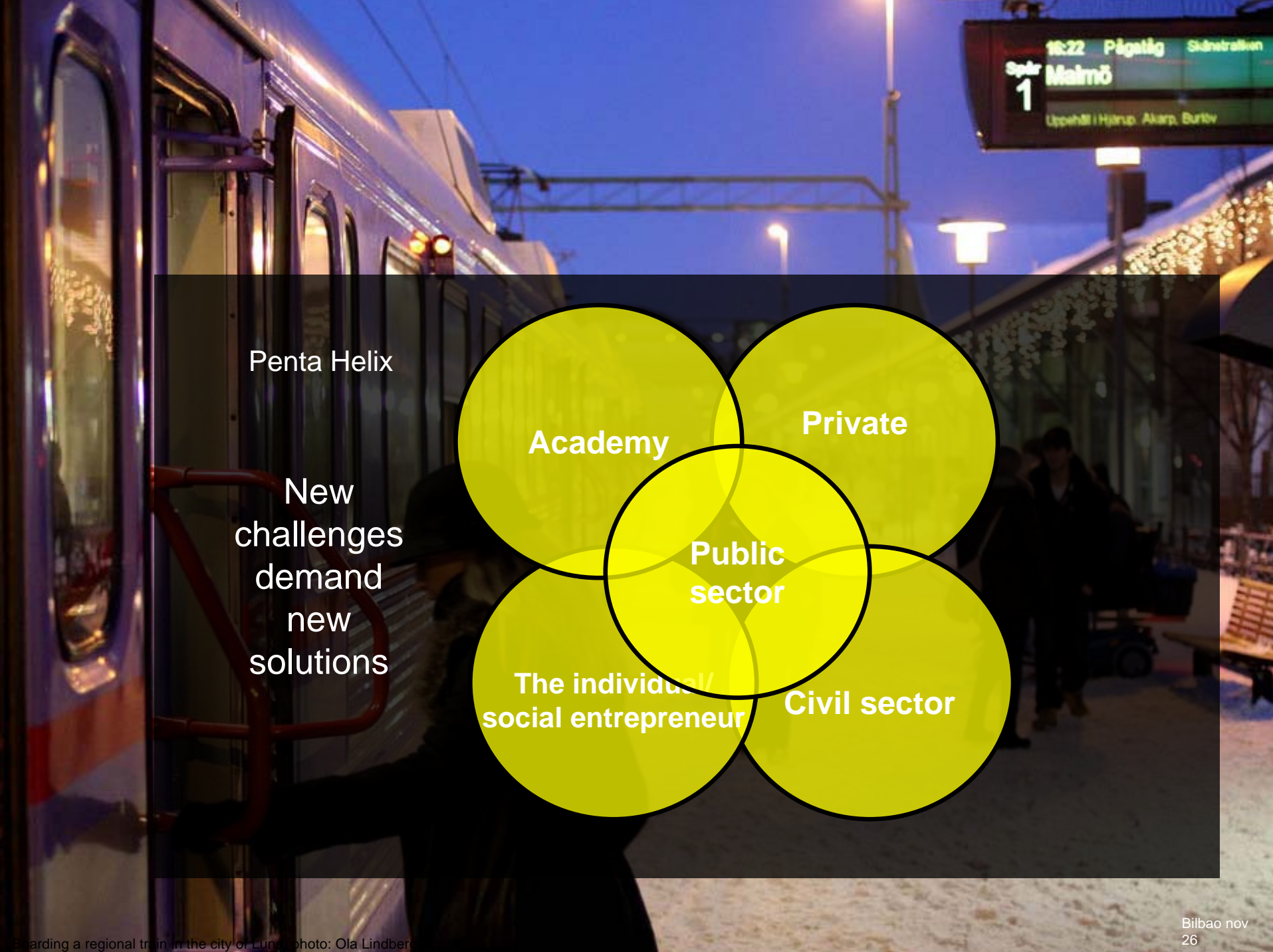




## Challenges to face

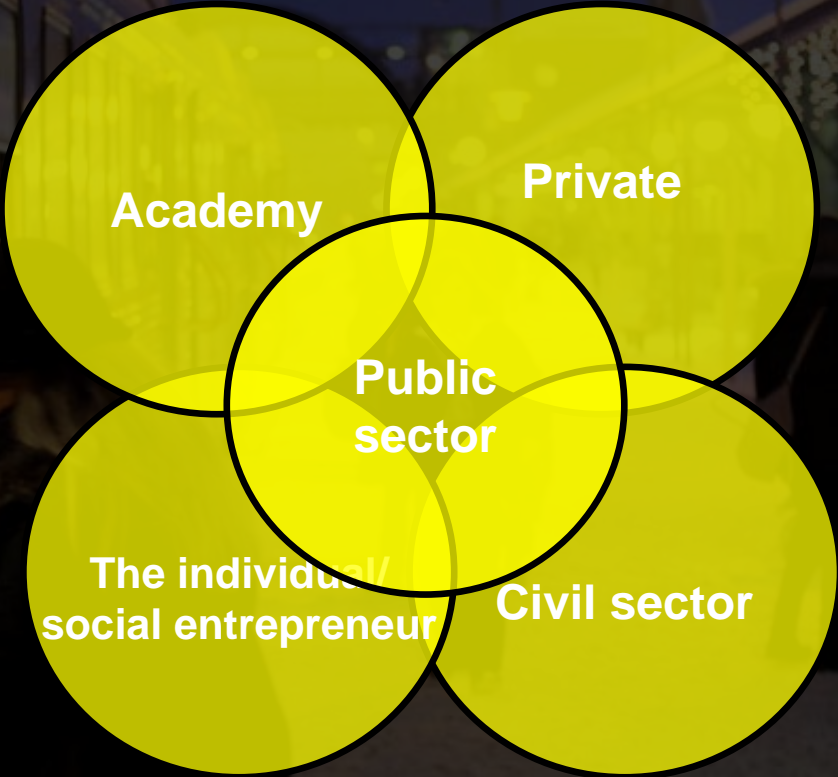
- Renewable Energy
- Clean Water
- Poverty
- Climate Change
- Declining Public Resources
- Ageing Population
- Optional Actors
- Youth Unemployment





Penta Helix

New  
challenges  
demand  
new  
solutions



Academy

Private

Public  
sector

The individual/  
social entrepreneur

Civil sector



## Interfaces

Social innovation grows at the interfaces!

- between different areas of knowledge
- between different sectors in society
- between private & public
- between research & development



## Important steps taken

- National Forum for Social Innovation
- Centre for Public Entrepreneurship
- Agreement on Cooperation between Region Skåne and the Third Sector in Skåne
- National Innovation Strategy

The image shows the Turning Torso tower in Malmö, Sweden, a distinctive skyscraper with a twisted design. In the foreground, there is a large, open plaza with many people sitting on a low wall or walking. The sky is clear and blue. A semi-transparent dark red box is overlaid on the right side of the image, containing text.

## Important actors

- National Forum for Social Innovation
- Malmö University (12 universities, 140 000 students)
- The City of Malmö
- Region Skåne
- Centre of Public Entrepreneurship
- Network for Social Economy Skåne (umbrella org.)
- The Capital Region of Copenhagen
- Sealand



# The Role of Region Skåne and Goals for the Future

- Leadership
- Facilitator
- Coordinator

National & regional level – ok!  
EU-level – on the go!  
Local level – still a lot to do!

# Øresund – social innovation region?

- Abundance of bottom-up/civil society initiatives
- Often built on cross-sector collaboration
- Academia/Government/civil society-social entrepreneurs (and a little business...)
- Cross-border collaboration increasing
- Strong support from government etc. for SI
- Øresund – leader in SI in the Nordic countries  
(CSE@RUC, FSI@MAH, SERNOG, SOCAP2012...)

# Urbs: Urban system/Sustainability

- ⦿ Demography: Relatively young population
- ⦿ Some polycentricity – Malmö/Copenhagen tend to dominate
- ⦿ Strong urbanist trend (Mayor of Malmö is an architect!)
- ⦿ Large investments in infrastructure
- ⦿ Emphasis on green-tech and sustainability (Augustenborg EcoCity, Western Harbour)
- ⦿ Urban regeneration initiatives in Malmö and Copenhagen

# Cyber: Connectivity

- ⦿ Extensive *public transport* (trains, metro, buses) – In Skåne, 100% increase in ten years
- ⦿ World-leading *bicycle culture* (urban/rural)
- ⦿ Extensive digital connectivity
- ⦿ *Social capital*, local communities: In general uncertain, but interesting examples (Christiania, Röstånga etc.) Across the sound – *some distrust*



# Civitas: socio-cultural/creative

- Community development/cross-sector initiatives - Yalla Trappan, Social Ventures 2200 etc.
- Multiculturalism/Immigration: Extensive!
- Strong creative/cultural movement
- Collaborative initiatives/innovation communities

# Polis: Citizen Participation and Network Governance

- ⦿ Regional identity vs national identity?
- ⦿ Decreasing understanding of each others language
- ⦿ No cross-national governance structure
- ⦿ E-governance not developed
- ⦿ Community participation/influence - increasing

## What we still need to develop!

- Longterm Strategies
- Good Exemples
- Increased Competence & Education
- Investment Capital
- Networking Activities
- Incubation Environments
- Research (10 000 researchers)
- Cooperation across "Borders"
- Bold Politicians—dedicated civil servants-local leaders

# What can Øresund learn from the Basque country?

- Urbs – system/sustainability
- Cyber – connectivity
- Civita – socio-cultural/creative
- Polis - Participation & network governance